

# PSMComm2

## PSM Series PC Software Control - Data Presentation - Storage

The PSM series of frequency response analyzers offer a high precision instrument for component analysis within a selectable frequency envelope. For ease of use, remote control, storage, and onward results processing our PC software, PSMComm2 is the ideal solution.

PSMComm2 is an easy to use Windows compatible software solution for use with our PSM range of Phase Sensitive Multimeters, it has a familiar looking intuitive interface. Each of the PSM's functions can be quickly and easily controlled on a connected desktop or laptop running this free software. Various measurement data display choices are available, including tabular, real time, graphical and as exportable Excel files.



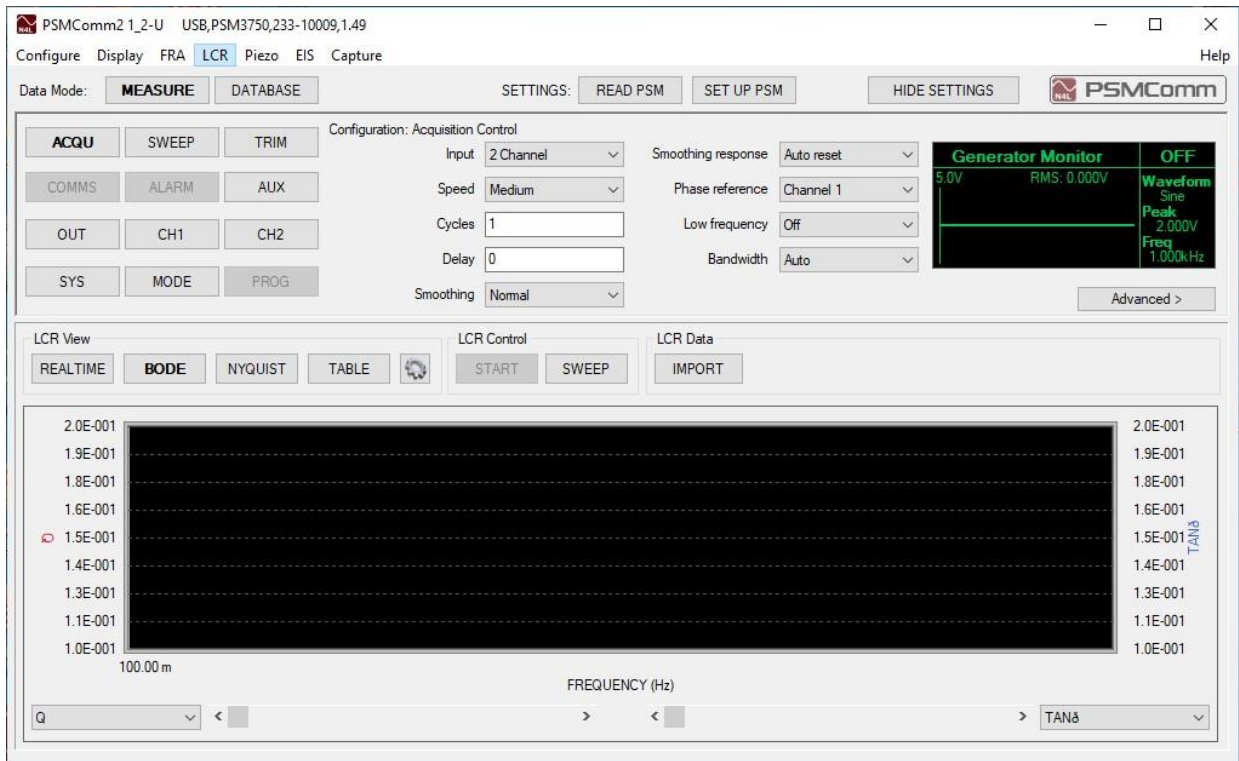
### PC Connectivity

The connection option found in the configure menu, allows the user to select the desired communications protocol, Serial RS232, LAN, and USB (PSM3750 only) to match with the settings on the PSM.

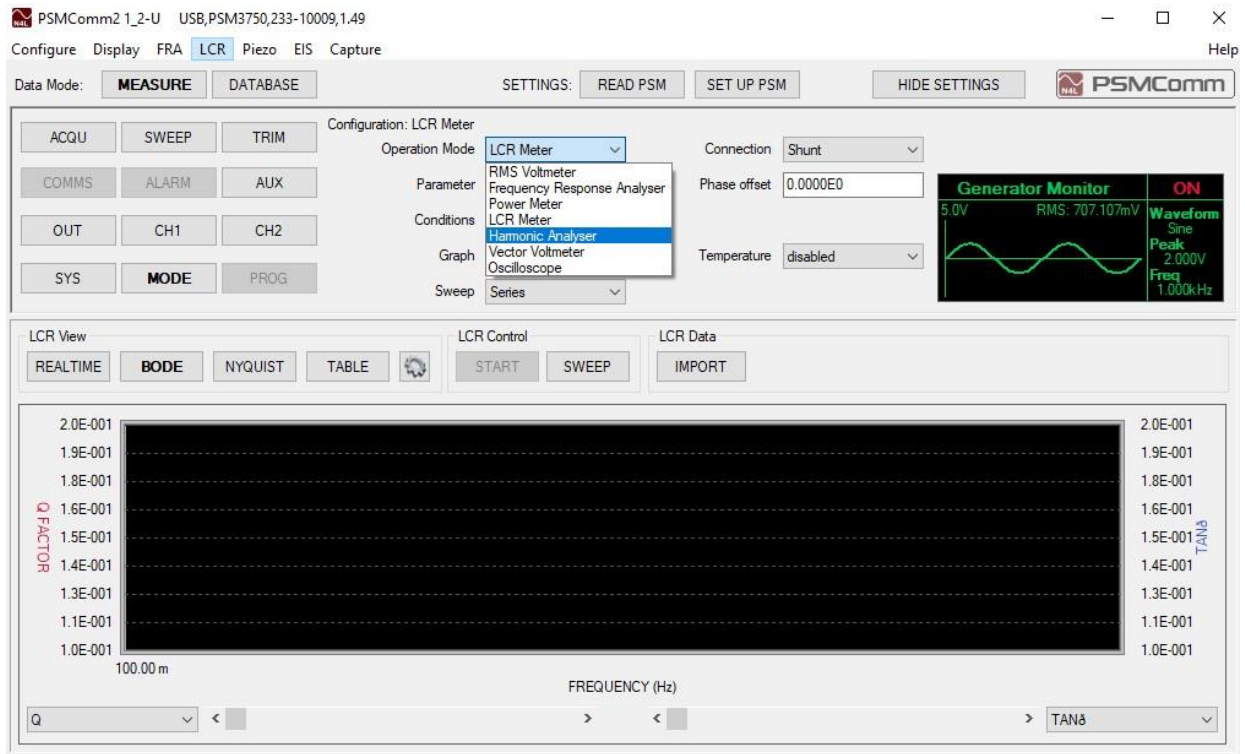
### PSM Configuration

The soft buttons on the PSMComm2 window mirror the actual keys and menu choices found on the instrument. The settings can be read from the instrument to PSMComm2 or transmitted from PSMComm2 to set the instrument by use of the READ PSM and SET UP PSM controls.

## Mode selection

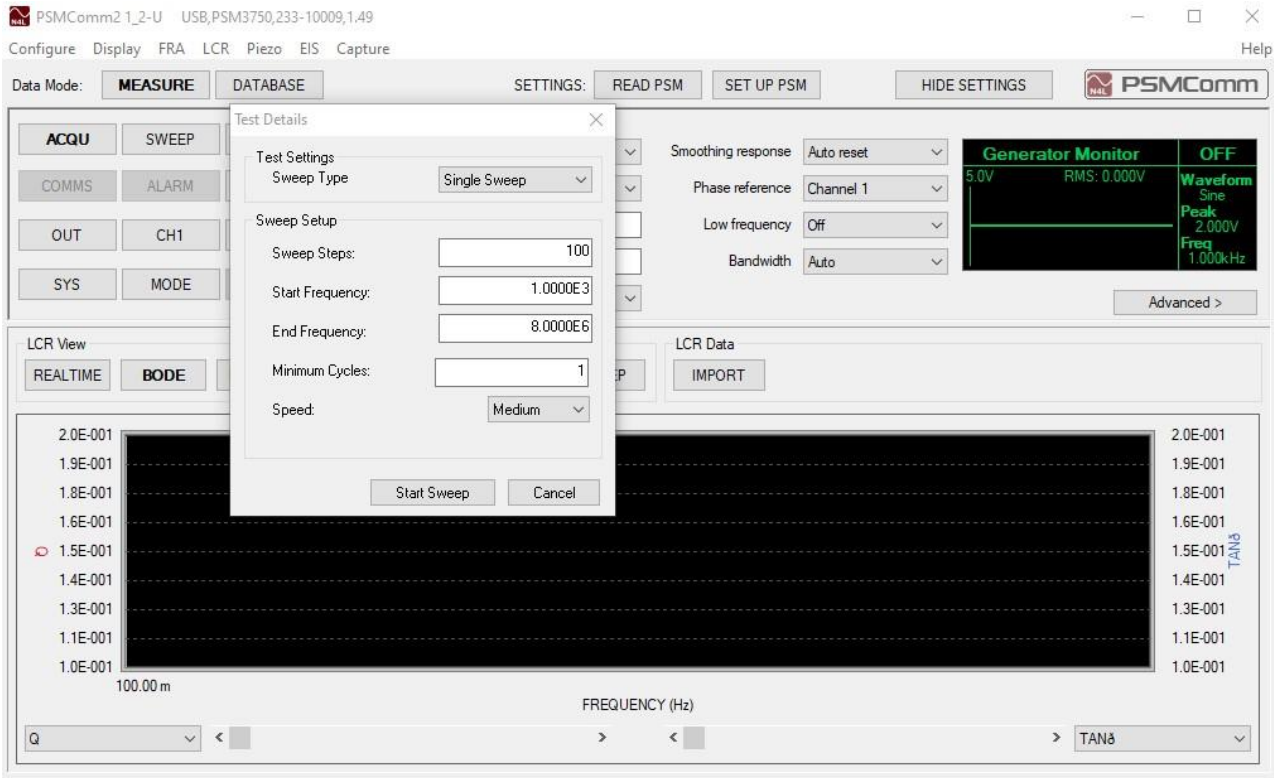


The bank of 12 on screen buttons on the left side of the window, replicate the hardware keys on the PSM, so that each function can be chosen via the MODE button and settings changed in the context sensitive menus that appear according to which button is pressed.



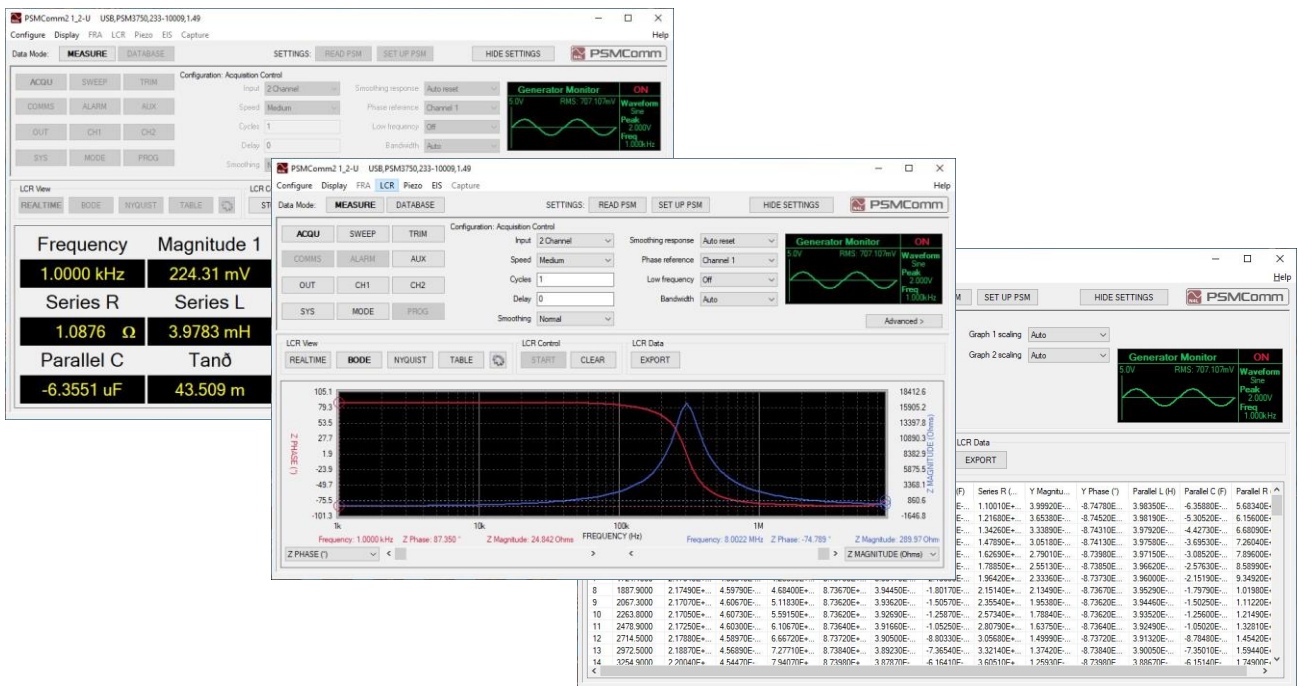
## Results options

Dependant on the mode and type of measurement being performed, a variety of display methods can be chosen from the data measured.



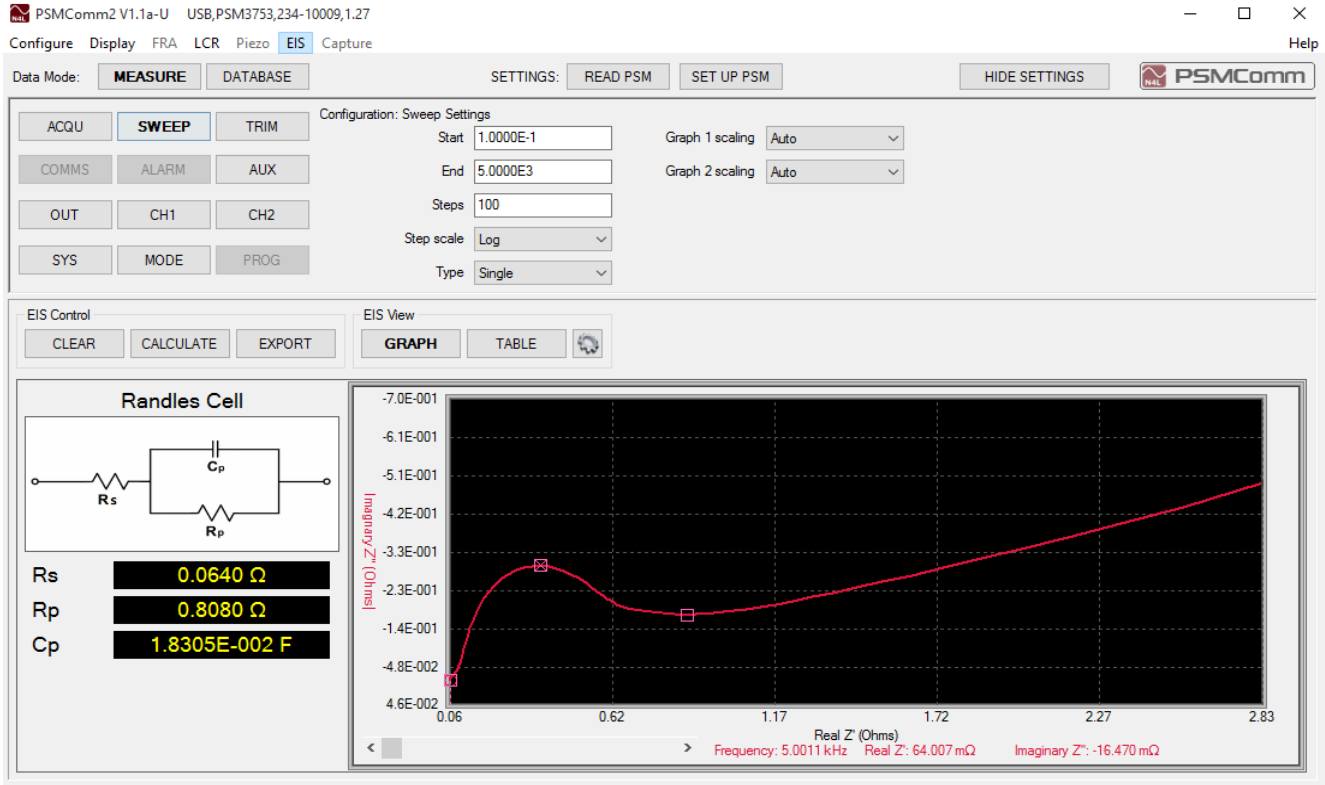
i.e., for an LCR sweep, the resultant sweep data can be displayed in one of four ways.

Real Time, Bode Plot, Nyquist Plot, or as a Table.

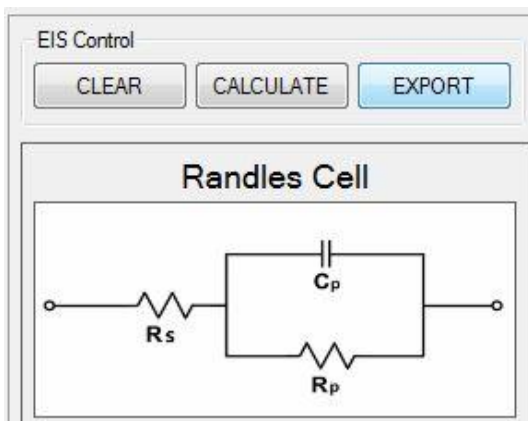


In addition to FRA or LCR sweeps, Piezo and EIS measurements can be recorded, displayed in multiple forms, and exported to Excel.

### EIS results

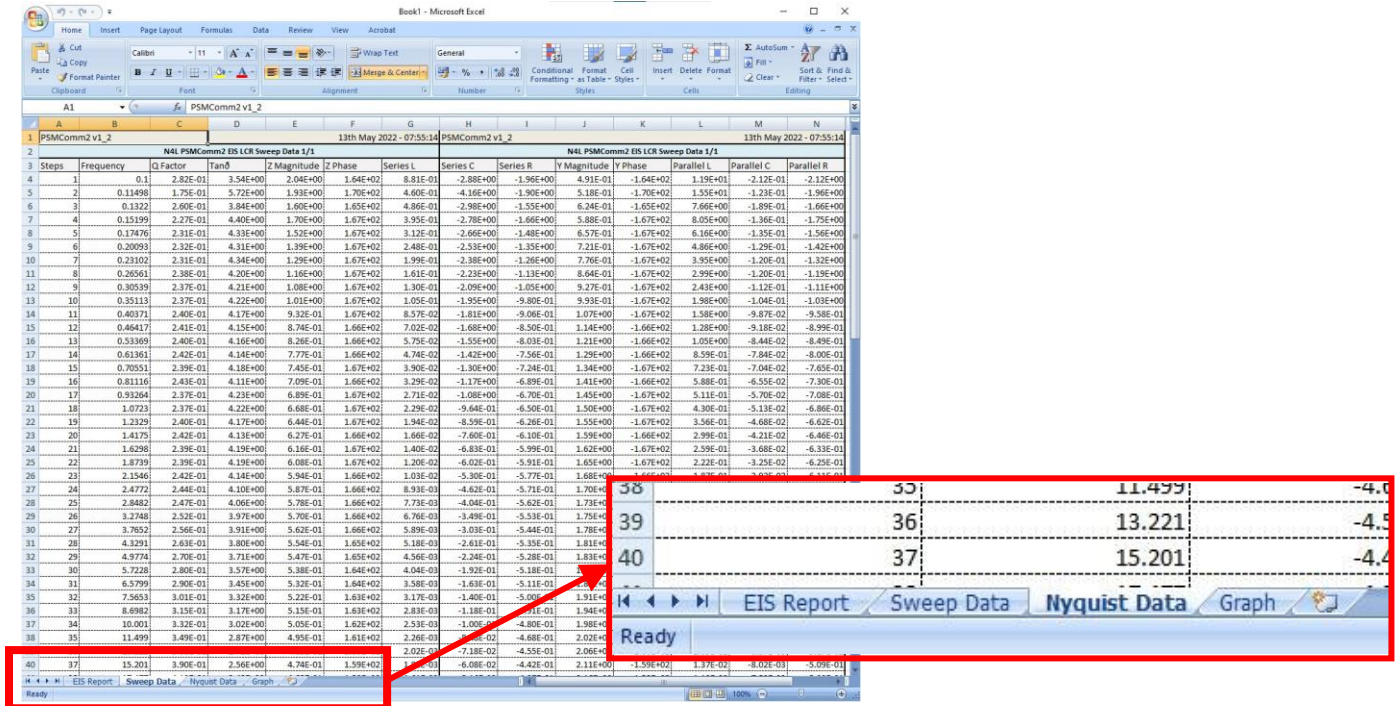


### Exporting to Excel



Exporting the sweep results to Excel as either .CSV or a .xlsx format file.

## Typical Excel EIS report



The Excel export contains multiple tabs, graph(s), & a report, the exact tabs being context dependent on the function being measured.

## DC Voltage Sweeps

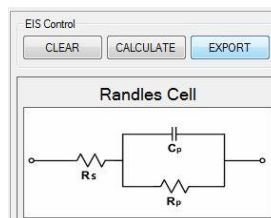
PSMComm2 allows the user to perform DC voltage sweeps. This is particularly useful for analysis of capacitors sensitive to DC bias or dielectric analysis.

## Database

PSMComm2's database is used for storing FRA plots in a reliable and reusable way. The plots can be exported to CSV & Excel as well as graphed. Multiple FRA sweeps can be graphed together, and calculations can be run on database FRA plots.

## Data Export

At the end of a sweep, the resultant data can be exported to an Excel spreadsheet by clicking the EXPORT button.



## Summary

Free Microsoft Windows Software for databasing, graphs, real time data display, Nyquist and Bode plots, Excel compatible output options

Microsoft, (Excel, Windows, Word, & C++) are trademarks of the Microsoft group of companies