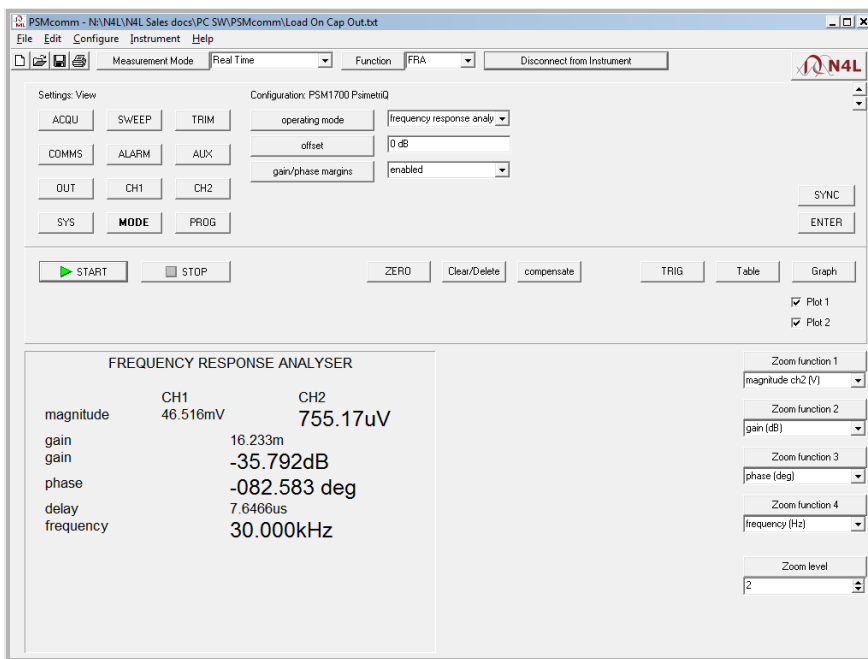


PSMcomm PC Software – Feature summary – February 2007

Enhancing the existing range of PC software options available for our Phase Sensitive Multimeters, new PC software called **PSMcomm** is released.

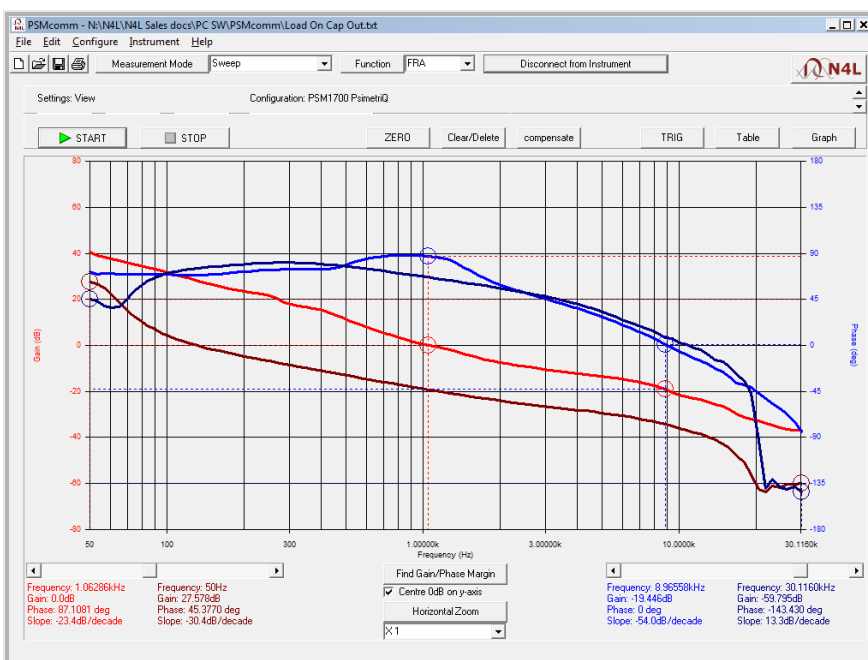
PSMcomm provides all the functions presently offered in our CommGRAPH software, plus many new functions that will increase the flexibility of a PC control and analysis environment.

Demonstration software with sample results files can be provided on request but for general reference, we follow with a summary of some key features that this new software includes.



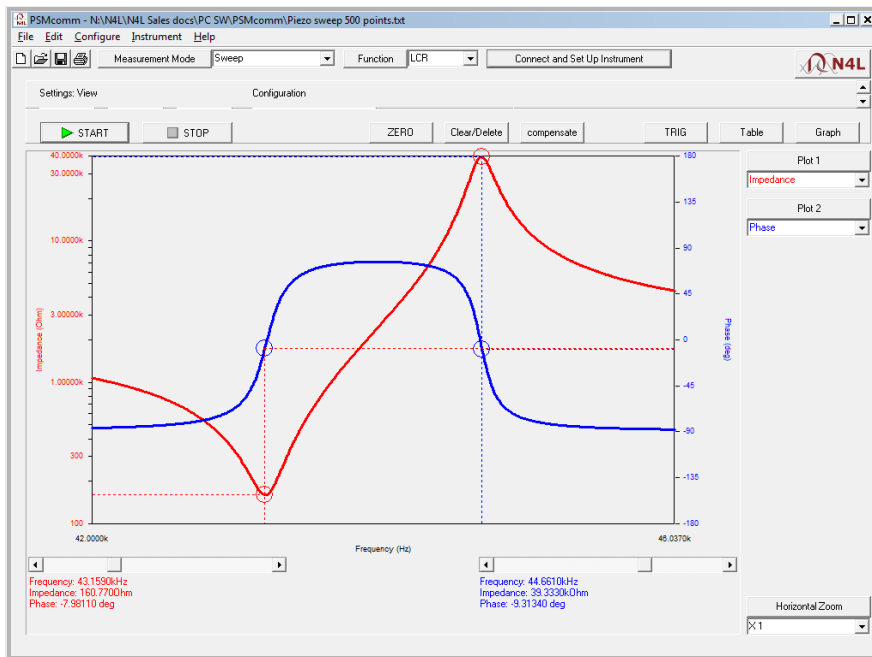
Control of all PSM functions and configuration settings is via PSM1700/1735 **keyboard emulation**. It is therefore very easy for anyone who has used the PSM front panel to use PSMcomm software and visa versa.

Real time mode presents a screen image matching the PSM display. This works in parallel with the PSM, so changes to the selected measurement functions or zoom level are also made to the PSM display real time.



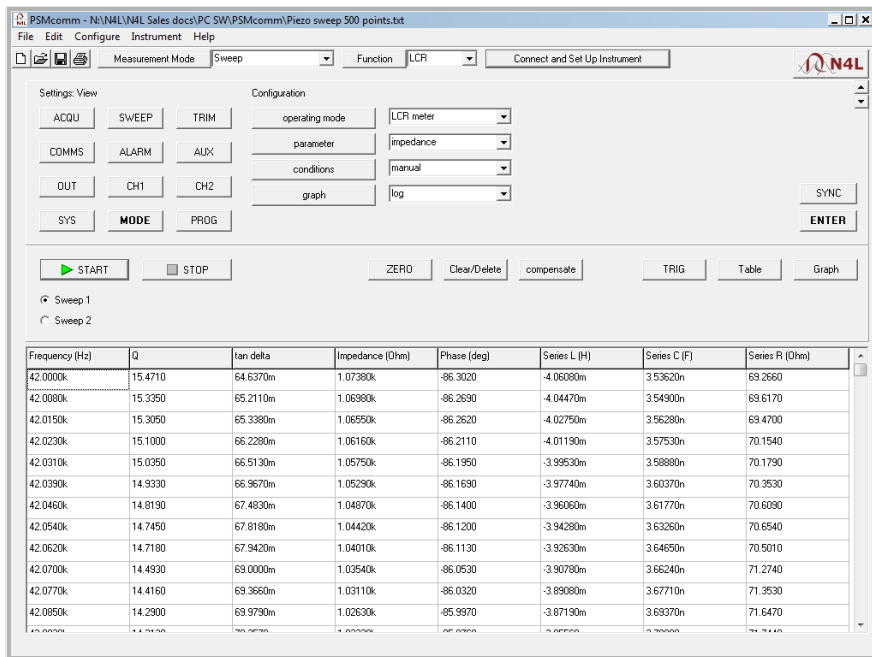
Sweep mode displays tabular data or graphical presentation as shown here. Additional functions include:

- Sweep 1 and Sweep 2 option for data comparison on separate plots
- Auto scale including partial decades on log axes
- Dual cursors
- Horizontal zoom
- Auto gain/Phase margin
- Control of instrument sweeps up to 2000 points or PC controlled sweeps with up to 9999 points.



Additional Graph features:

- When an impedance sweep is made, any 2 of 7 functions can be graphed
- Selectable horizontal zoom



Frequency (Hz)	Q	tan delta	Impedance (Ohm)	Phase (deg)	Series L (H)	Series C (F)	Series R (Ohm)
42.0000k	15.4710	64.6370m	1.07380k	-86.3020	-4.06080m	3.53620n	69.2660
42.0080k	15.3350	65.2110m	1.06980k	-86.2690	-4.04470m	3.54900n	69.6170
42.0150k	15.3050	65.3380m	1.06550k	-86.2620	-4.02750m	3.56280n	69.4700
42.0230k	15.1000	66.2280m	1.06160k	-86.2110	-4.01190m	3.57530n	70.1540
42.0310k	15.0350	66.5130m	1.05750k	-86.1950	-3.99530m	3.58880n	70.1790
42.0390k	14.9330	66.9670m	1.05290k	-86.1690	-3.97740m	3.60370n	70.3530
42.0460k	14.8190	67.4830m	1.04870k	-86.1400	-3.96060m	3.61770n	70.6090
42.0540k	14.7450	67.8180m	1.04420k	-86.1200	-3.94280m	3.63260n	70.6540
42.0620k	14.7180	67.9420m	1.04010k	-86.1130	-3.92630m	3.64650n	70.5010
42.0700k	14.4930	69.0000m	1.03540k	-86.0530	-3.90780m	3.66240n	71.2740
42.0770k	14.4160	69.3660m	1.03110k	-86.0320	-3.89080m	3.67710n	71.3530
42.0850k	14.2900	69.9790m	1.02630k	-85.9970	-3.87190m	3.69370n	71.6470

- Minimize table or graph to reveal control settings
- 'Sync' function to synchronise PSMcomm configuration settings with PSM instrument

Data storage and print:

- Save data to any specified file
- All saved records include instrument settings for simple repeat testing
- All tables and graphs can be sent to any direct or network printer configured for the PC running PSMcomm
- Any graph can be imported into 'office' documents using a copy bitmap and paste function

Frequency (Hz)	Q	tan delta	Impedance (Ohm)	Phase (deg)	Series L (H)	Series C (F)	Series R (Ohm)
42.0000k	15.4710	64.6370m	1.07380k	-86.3020	-4.06080m	3.53620n	69.2660
42.0080k	15.3350	65.2110m	1.06980k	-86.2690	-4.04470m	3.54900n	69.6170
42.0150k	15.3050	65.3380m	1.06550k	-86.2620	-4.02750m	3.56280n	69.4700
42.0230k	15.1000	66.2280m	1.06160k	-86.2110	-4.01190m	3.57530n	70.1540
42.0310k	15.0350	66.5130m	1.05750k	-86.1950	-3.99530m	3.58880n	70.1790
42.0390k	14.9330	66.9670m	1.05290k	-86.1690	-3.97740m	3.60370n	70.3530
42.0460k	14.8190	67.4830m	1.04870k	-86.1400	-3.96060m	3.61770n	70.6090
42.0540k	14.7450	67.8180m	1.04420k	-86.1200	-3.94280m	3.63260n	70.6540
42.0620k	14.7180	67.9420m	1.04010k	-86.1130	-3.92630m	3.64650n	70.5010
42.0700k	14.4930	69.0000m	1.03540k	-86.0530	-3.90780m	3.66240n	71.2740
42.0770k	14.4160	69.3660m	1.03110k	-86.0320	-3.89080m	3.67710n	71.3530